

The Integrated AC Drives Solution



New M1 Series The Integrated Global AC Drives Solution

System integration on EtherCAT® leads you to the stage where machine design is more flexible and higher efficiency, such as expanding motor options, reducing wiring, saving space, and integrated configuration by software tool. Safety functionality realizes a safe working environment, and the flexible network topology, like ring topology, makes your



Flexible and efficient engineering

Optimization of machine design

Machine design flexibility is enhanced by scalable Omron EtherCAT solutions.

Efficiency of assembly and configuration

Easy wiring and integrated configuration software tool for all of Omron automation components improve development efficiency of your team.

Safe and reliable manufacturing

Safe working environment

The M1 Series realizes a safe working environment according to the customer requirement—not only alone but also together with Omron's scalable safety solutions.

Reliable production

We always consider that a safe working environment should not limit the production capability. Integrated safety solutions, such as sensors, controllers, drives and collaborative robots, enable reliable production.

production more robust.

Sustainability in production lines will be supported by highly efficient motors, energy saving functions, efficient power supply, and energy consumption monitoring on IoT technology.



Sustainable manufacturing

System digitalization

The networked system makes the machine closer to IoT technology. It enables to show machine condition on a dashboard at the factory floor or remotely.

Energy saving

In addition to functions in the drive itself, supporting highly efficient motors makes the machine flexible and efficient.

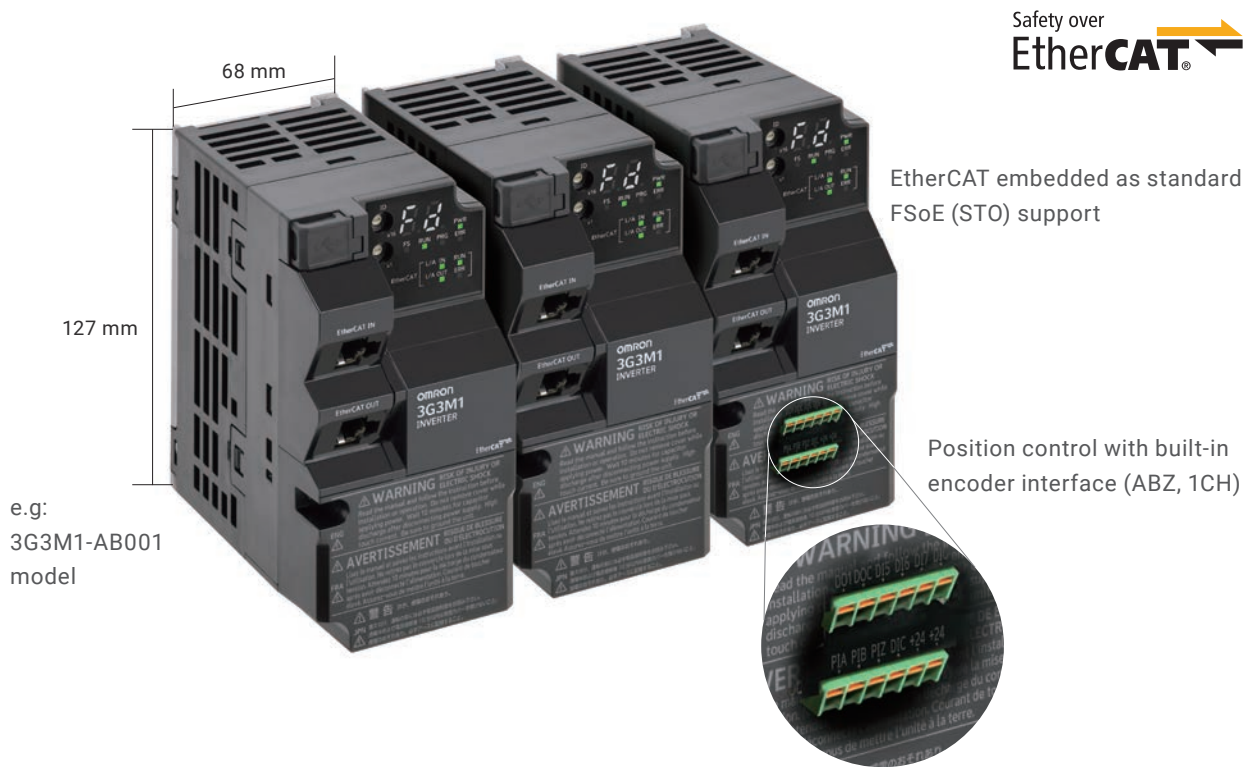


M1 Series

Flexible and efficient engineering

Optimization of machine design

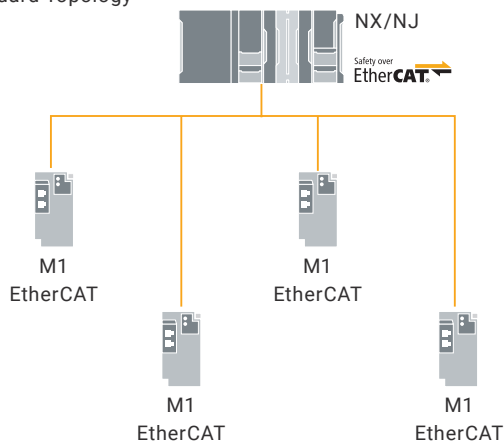
Built-in EtherCAT allows you to integrate the M1 Series into any EtherCAT network. It saves total engineering cost.



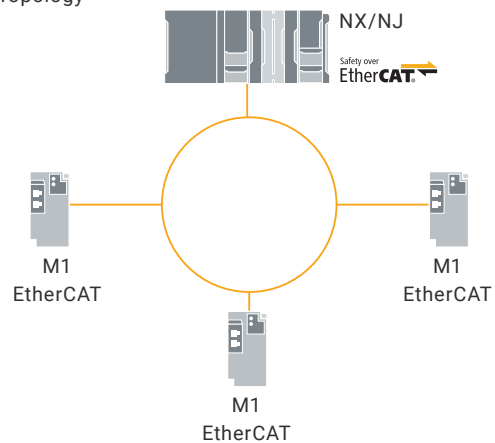
Flexible connection

The EtherCAT topology allows variable machine design, and the ring topology contributes to robust manufacturing.

Standard Topology

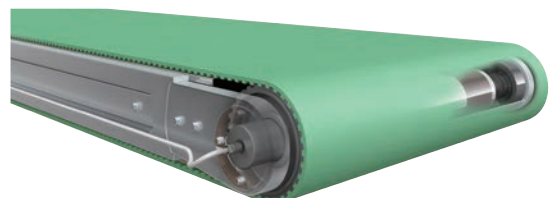


Ring Topology



Choices of motors

The M1 Series expands the choices of motors that can be used for the drive system. Standard induction motors, permanent magnet motors, direct drive PM motors (up to 128 poles), and special motors such as drum motors are supported. Motor parameters can be adjusted by autotuning function in Sysmac Studio.



Efficiency of assembly and configuration

Enhanced usability

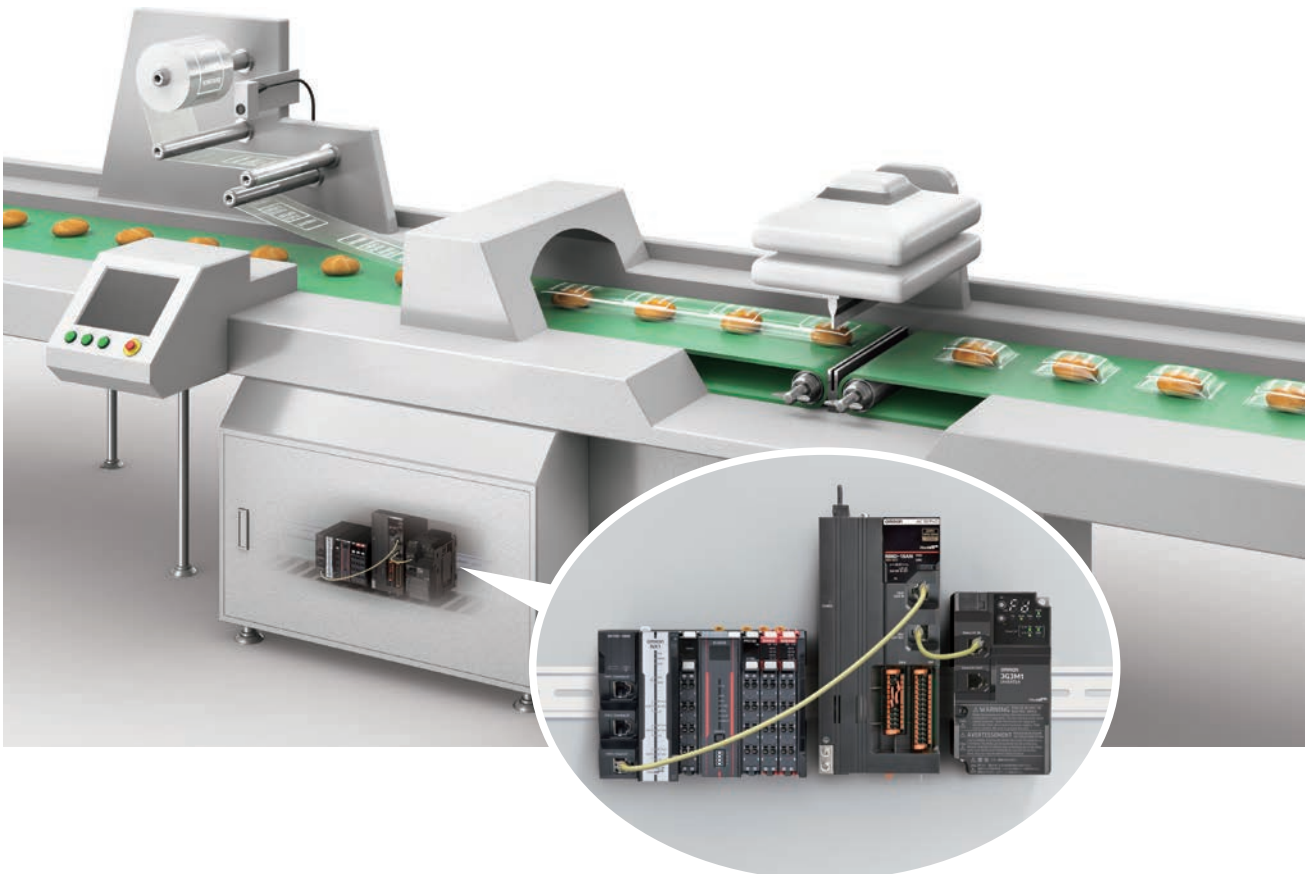
One software for programming, configuration, simulation and monitoring.
User friendly and helpful GUI for drive configuration by Sysmac Studio Drive Edition.



- Integrated configuration
- Setup & Tuning
- Wizards
- Data Trace Monitor
- Test Run
- Auto Tuning

Reduce wiring, improve efficiency

Easy wiring by EtherCAT leads to quick installation and less mistakes. Also small footprint reduces the panel size.



Safe and reliable manufacturing

Safe working environment

Safety always comes first. Omron's scalable safety solutions allow you to design machine safety according to customer needs.

The M1 Series expands the flexibility of your safety solution.

Reliable production

Modern production lines should be safe and reliable at the same time.

Omron's integrated safety solution realizes a safe working environment for workers and high operational availability of each machine.



1 Safety Door Switches

D4SL-N Guard Lock Safety-door Switch



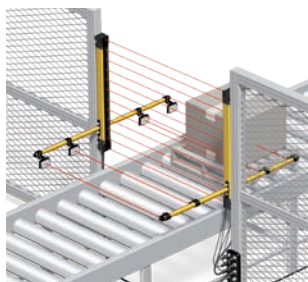
2 Safety Laser Scanners

OS32C Safety Laser Scanner



3 Programmable Safety Controller

Machine Automation Controllers
NX-Series NX1 CPU Units
NX-series Safety Controllers
NX-SL5/SI/SO Safety Control Units



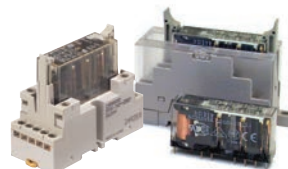
4 Safety Light Curtains

F3SG-SR/PG Series
Safety Light Curtains/Safety Multi-Light Beam



5 Safety Relay Units

G9SA Safety Relay Units



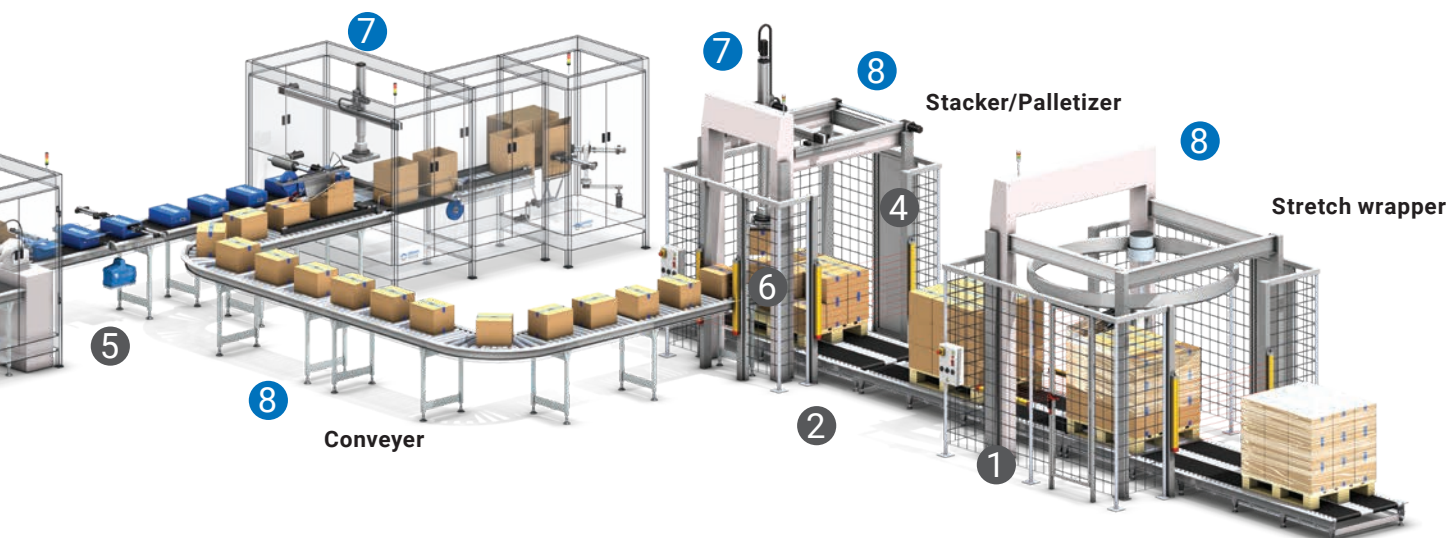
6 Force-guided Relays

G7SA/G7S-E Relay with Forcibly Guided Contacts



7 Motion and Drives

AC Servo System 1S-series with Safety Functionality



8 Motion and Drives

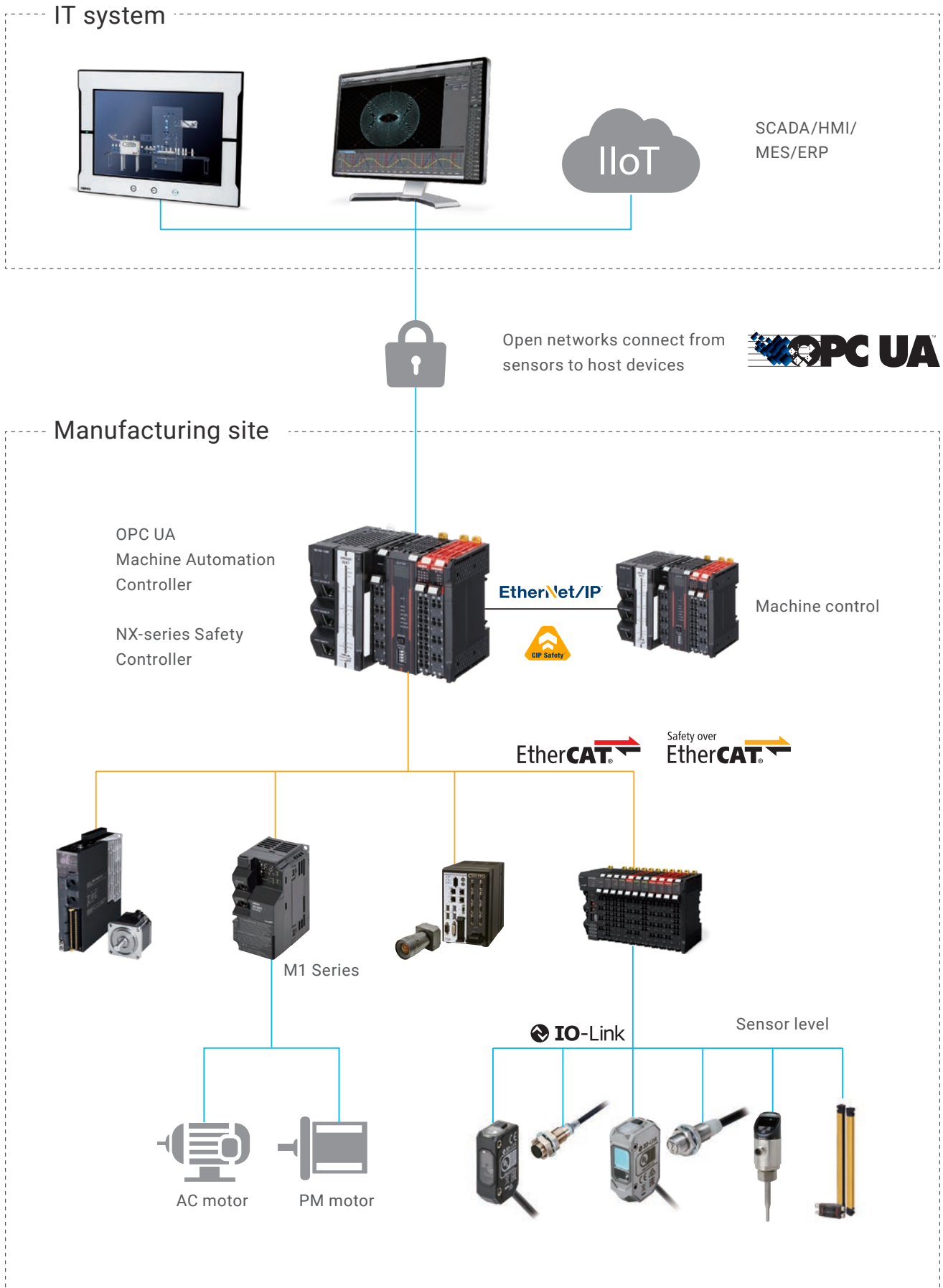
The M1 Series expands the possibility to support a variety of machine types which require high level safety.

- STO (ISO 13849-1 Cat.3/PLe)
- FSoE
- Safety input (2CH) + EDM output



M1 Series

Sustainable manufacturing



System digitalization

The networked system makes the machine closer to IoT technology. Information of each device can be gathered from the upper layer controller and displayed as useful information to understand the condition of the production line. The information can be shown at the factory floor or monitored from a different location remotely, not only informing current conditions but also being useful for predictive maintenance.



Energy saving

Almost half of world's electrical power consumption is by motors. Selecting the correct motor and optimizing the motion are the most effective way to save energy. The M1 Series has adaptability for various kinds of motors and ability to drive them.



M1 Series lineup

Built-in EtherCAT Communications Type

Safety over
EtherCAT



- Power supply and capacity
 - Single-phase 200 V: 0.1 to 3.7 kW
 - Three-phase 400 V: 0.4 to 22 kW
 - Three-phase 200 V: 0.1 to 22 kW
- High starting torque: 200% at 0.5 Hz
- Safety function: STO (Safe Torque Off), PLe/SIL3
- Safety over EtherCAT (FSoE)
- Built-in ABZ phase
- Built-in EtherCAT communication

Standard Type



- Power supply and capacity
 - Single-phase 200 V: 0.1 to 3.7 kW
 - Three-phase 400 V: 0.4 to 22 kW
 - Three-phase 200 V: 0.1 to 22 kW
- High starting torque: 200% at 0.5 Hz
- Safety function: STO (Safe Torque Off), PLe/SIL3
- Built-in ABZ phase

Automation platform

Machine Controller



The NX-series Safety Network Controller connected with the NX1 Machine Controller enables the use of both EtherNet/IP + CIP Safety and EtherCAT + FSoE at the same time.

NJ/NX Series

- Logic sequence, Motion, Safety, Robotics and Database connection functionality
- Scalable motion control: CPUs from 2 up to 256 axes
- IEC 61131-3 controller
- PLCopen Function Blocks for Motion Control and Safety
- Advanced motion with Robotics functionality
- Built-in EtherCAT and EtherNet/IP ports

Motion



1S Motion Safety servo

- Servo drive for rotary motors
- Up to 3 kW
- Battery-free absolute multi-turn encoder
- Advanced safety functions: STO/SS1/SS2/SOS/SLS/SLP/SDI/SBC
- Servo drive for rotary motors with one cable connection

1S Servo System - General purpose servo

- Servo drive for rotary motors
- Up to 15 kW
- Battery-free absolute multi-turn encoder
- Safety function: STO



Software



Sysmac Studio, the integrated software

- One single tool for logic sequence, motion, safety, robotics, vision and HMI
- Fully compliant with open standard IEC 61131-3
- PLCopen Function Blocks for Motion and Safety
- Supports Ladder, Structured Text and In-Line ST programming with a rich instruction set
- CAM editor for easy programming of complex motion profiles
- Database Connectivity Function Block library



Sysmac is a trademark or registered trademark of OMRON Corporation in Japan and other countries for OMRON factory automation products. Windows and SQL Server are either registered trademarks or trademarks of Microsoft Corporation in the United States and/or other countries. EtherCAT® and Safety over EtherCAT® are registered trademarks and patented technologies, licensed by Beckhoff Automation GmbH, Germany. EtherNet/IP™ and CIP Safety™ are trademarks of ODVA. OPC UA and OPC Certified logo are trademarks of the OPC Foundation. Other company names and product names in this document are the trademarks or registered trademarks of their respective companies. The product photographs and figures that are used in this catalog may vary somewhat from the actual products. Microsoft product screen shot(s) reprinted with permission from Microsoft Corporation. Some images are used under license from Shutterstock.com.

Note: Do not use this document to operate the Unit.

OMRON Corporation Industrial Automation Company

Kyoto, JAPAN

Contact : www.ia.omron.com

Regional Headquarters

OMRON EUROPE B.V.

Wegalaan 67-69, 2132 JD Hoofddorp
The Netherlands
Tel: (31) 2356-81-300 Fax: (31) 2356-81-388

OMRON ELECTRONICS LLC

2895 Greenspoint Parkway, Suite 200
Hoffman Estates, IL 60169 U.S.A.
Tel: (1) 847-843-7900 Fax: (1) 847-843-7787

OMRON ASIA PACIFIC PTE. LTD.

438B Alexandra Road, #08-01/02 Alexandra
Technopark, Singapore 119968
Tel: (65) 6835-3011 Fax: (65) 6835-3011

OMRON (CHINA) CO., LTD.

Room 2211, Bank of China Tower,
200 Yin Cheng Zhong Road,
PuDong New Area, Shanghai, 200120, China
Tel: (86) 21-6023-0333 Fax: (86) 21-5037-2388

Authorized Distributor:

©OMRON Corporation 2022-2023 All Rights Reserved.
In the interest of product improvement,
specifications are subject to change without notice.

CSM_1_2

Cat. No. I925-E1-03 1023 (0922)